



SHIRE OF
MOUNT MAGNET

Postage Paid
MOUNT MAGNET
WA AUST 6638

COUNCIL COMMENTS

February 2015

Lot 163 Hepburn Street (PO Box 62)
Phone: (08) 9963 3000 Fax: (08) 9963 4133
Email: shire@mtmagnet.wa.gov.au
Website: www.mtmagnet.wa.gov.au

COUNCILLORS

Ashley Dowden	Jorgen Jensen	Kevin Brand
Bob Ford	Wendy McGorman	Jason Homewood
Carole Minney	Joe O'Brien	Eliz Morris

SHIRE OF MOUNT MAGNET Ordinary Meetings of Council

2015	
February	Friday, 20
March	Friday, 20
April	Friday, 17
May	Friday, 22
June	Friday, 19

Meetings commence at 1:00pm in Council Chambers,
Lot 163 Hepburn Street, Mount Magnet

MURCHISON REGIONAL VERMIN COUNCIL Ordinary Meetings of Council

2015	
March	Tuesday, 10
June	Tuesday, 9
August	Monday, 8
December	Tuesday, 8

Meetings commence 10:00am in Council Chambers,
Lot 163 Hepburn Street, Mount Magnet



MOUNT MAGNET FITNESS CENTRE



Phone: (08) 99633 000 Fax: (08) 9963 4133
shire@mtmagnet.wa.gov.au

Membership Fees & Charges

Annual \$ 370.00
Monthly \$ 36.00
Weekly \$ 9.00

Bond - Access Card \$ 50.00
(refundable on return of access card)

7 Days: 4:00am to 10:00pm



MOUNT MAGNET VISITOR CENTRE



Phone: (08) 9963 4172 Fax: (08) 9963 4289
visitor@mtmagnet.wa.gov.au

"Hub of the Murchison"

- * Statewide Information
- * Gift Shop
- * Internet Access
- * Brochures
- * Maps
- * Rock Exhibition

Entry into the Mining & Pastoral Museum



Weekdays

9:00am to 12:00 noon



MOUNT MAGNET CARAVAN PARK



Phone: (08) 9963 4198 Fax: (08) 9963 4961
caravanpark@mtmagnet.wa.gov.au

Stop, Rest & Rejuvenate

- * Powered Sites
- * 12 Single Units
- * Potable Water
- * Unpowered Sites
- * 7 Ensuite Units
- * Pet Friendly

**Modern & Stylish
New Amenities Building**



MOUNT MAGNET LIBRARY

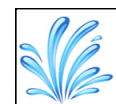


Phone: (08) 9963 4480 Fax: (08) 9963 4969
library@mtmagnet.wa.gov.au

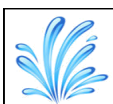
"Reading is dreaming with open eyes"

- * Interlibrary Loans
- * Audio Books/DVD's
- * Oral History Program
- * e-Library
- * Book Exchange
- * Internet Access

**Tuesday to Friday
From 12:30pm to 4:00pm**



Memorial Swimming POOL

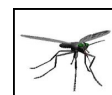


Opening Hours

Weekdays	Weekends & Public Holidays	Weekday School Holidays
6:00am - 7:00am	Closed early morning	6:00am - 7:00am
10:00am - 12:00pm	10:00am - 12:00pm	10:00am - 12:00pm
2:00pm - 6:30pm	1:30pm - 6:30pm	1:30pm - 6:30pm



Mosquito CONTROL



The Shire of Mount Magnet fogs for mosquitoes on a weekly basis (weather permitting) between 6:30 and 8:00pm. The Caravan Park grounds are fogged between 7:30pm and 8:00pm.

Please be mindful of this when you are preparing food or eating. The fogger has a plume of fog trailing from it and makes a distinctive putt putt sound (loud).



MESSAGE FROM THE CHIEF EXECUTIVE OFFICER

Mount Magnet Shire Acknowledges Country

At its meeting held last Friday, the Council of the Shire of Mount Magnet made two gestures in the spirit of reconciliation:

The Shire will obtain an additional copy of the Aboriginal flag, which in future will be displayed in the Shire's Council chamber alongside the Australian Blue Ensign and the Western Australian Flag.

Future Council meeting agendas will include an "*Acknowledgement of Country*" preamble, as follows:

The Mount Magnet Shire Council embraces the Heritage of the land on which we meet. Council pays respect to the Elders and Ancestors of this land. Council acknowledges the Culture forever embedded with the Custodians of this Country.

According to the 2011 census figures, Aboriginal people make up approximately 43% of the population of the Mount Magnet Shire's district.

The Shire President, Cr Ashley Dowden, said he doesn't anticipate reading the preamble aloud at every Council meeting. "The Council has agreed on a form of words, and they will be read aloud at significant community events".

Warren Olsen
Chief Executive Officer



Mount Magnet Markets

Date: Saturday 7th MARCH 2015

Venue: Foster/Federation Park

Time: 9:00am to 12:00 noon



Proposal to Wind-Up the Mount Magnet Land Conservation District Committee

Public comment is invited in relation to the proposed wind-up of the Mount Magnet Land Conservation District Committee (LCDC).

LCDC's are statutory bodies formed under Section 23 of the *Soil and Land Conservation Act 1945*. Their functions include undertaking land conservation works, promoting soil conservation programs and providing advice to the Department of Agriculture and Food on land use issues within their districts.

The Mount Magnet LCDC is proposed to be abolished because of lack of interest.

If you wish to comment on this proposal, please write to the Commissioner by **31 March 2015**. All comments received will be presented to the Minister for Agriculture and Food before the LCDC is formally wound-up.

Commissioner of Soil and Land Conservation
Department of Agriculture and Food
Locked Bag No 4
BENTLY DELIVERY CENTRE WA 6983

For further information please contact:
Mary-Anne Bogucki
Phone: (08) 9368 3301



Mount Magnet Police Beat

Mount Magnet Police Station
33 Richardson Street
PO BOX 283
Mount Magnet 6638 WA
TP: (08) 9963 3222
Fax: (08) 9963 3226

Hello Everyone. Welcome to the Mount Magnet Police Beat.

What we hope to achieve with the article is keep the community of Mount Magnet informed of issues relating to and affecting everyone, reported crime spikes, increase the information flow between Police and community members. Also to show that we are people here to do a job, the same as the majority of you.

We continually get comments regarding the Police Station not being open.

'If crime only occurred in the Police Station, we'd be there 24/7.'

The unfortunate reality is we have a large sub-district / shire to look after and can't be everywhere at once. We do our best, at all times.

Another interesting point is, just because the office of the Police Station is closed or locked, doesn't mean we aren't working or around the town.

If you come to the station and the office is closed, please don't use the PET Intercom on the front wall. PET stands for Police Emergency Telephone. This intercom is only to be used, when the situation is an emergency.

The Station Telephone number is listed on the front window and above. If you need to speak with one of us, please ring that number. If you have any other phone number, please don't use it.

If we are out of phone range or tied up with another job, the phone diverts to Geraldton. They have staff working 24/7, so explain the situation to them and if need be, they will contact us.

Of late, we're been very surprised with the lack of home security by community members who have had to report Burglary or stealing offence to us. Your belongings and house are your responsibility. You need to ensure that all your doors and windows lock. We can give you all the crime prevention advise under the sun, however if you don't do something about it and look after your belongings, chances are, offenders will take them.

On a lighter note, my quote of the month:
The only true wisdom is in knowing you know nothing.

Stay safe and have a good month.

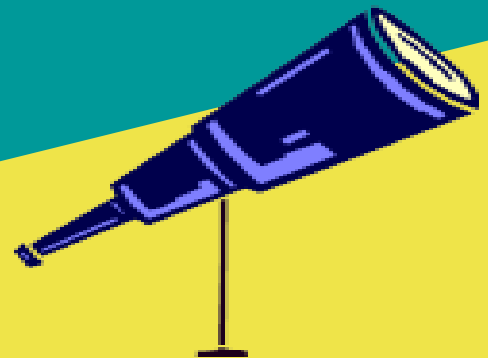
Matt FOGARTY
Sergeant – Officer in Charge.
Mount Magnet Police Station



Mount Magnet Astro Rocks Festival

22-23 May 2015

FOR UPCOMING INFORMATION
Website: www.mtmagnet.wa.gov.au
Phone: (08) 99634172
Email: visitor@mtmagnet.wa.gov.au
Visit: Mount Magnet Visitor Centre
Weekdays - 9:00am to 12 noon



Hosted by the Shire of Mount Magnet, planning for the Mount Magnet 2015 Astro Rocks Fest is well underway. Information will soon be available on the Shire website, where you can see last year's Programme under Annual Events.

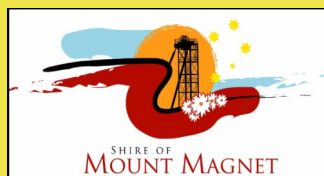
Following the success of 2013 and 2014 Astro Rocks Fest, it is hoped to continue building community involvement so that, no matter what age, we can all share in this great celebration of the awesome night sky above and the ancient earth beneath our feet.

If you, your family or a community group would like to become involved in preparations, setting up or to participate, including to fundraise, please contact Karen at the Visitor Centre (contact details above.)

You might like to:

- * display your rock collection
- * demonstrate how a metal detector works
- * run a Rock Garden session
- * help with activities
- * suggest a new idea

All contact will be welcome, so please think of a way to become involved



Clean Up Day

CELEBRATING 25 YEARS
1990-2015



SUNDAY 8 MARCH 2015

Registration 8:30am at the Memorial Swimming Pool

BBQ brunch at the pool for registered participants commencing at 10:30am. Please bring a hat. All welcome

MAJOR SPONSORS



SPONSORS



SUPPLIERS



Community Calendar

MARCH 2015

Monday	Tuesday	Wednesday	Thursday	Friday	Saturday	Sunday
						1 Yamatji Church St Brigids Liturgy
2 Labour Day	3 Seniors Group	4 St John Training	5 Netball Op Shop Volunteer Fire Brigade	6	7 Markets Pottery Club	8 C.U.A.D. (see Pg 12) Yamatji Church Presbyterian Service St Brigids Liturgy
9 Basketball	10 MRVC Meeting Seniors Group	11	12 Netball Op Shop Volunteer Fire Brigade	13	14 Pottery Club	15 Yamatji Church Presbyterian Service St Brigids Liturgy
16 Basketball	17	18	19 Netball Op Shop Volunteer Fire Brigade	20	21	22 Yamatji Church Presbyterian Service St Brigids Liturgy
23 Basketball	24 Seniors Group	25 St John Training	26 Netball Op Shop Volunteer Fire Brigade	27 Council Meeting	28 Pottery Club	29 Yamatji Church Presbyterian Service St Brigids Liturgy
30 Basketball	31 Seniors Group					

Community Groups

<u>Community Group</u>	<u>Contact Person</u>	<u>Contact No.</u>
Bidi Bidi Centre	Janine Bidois	(08) 9963 4508
Department for Child Protection	Sharon Wolgar	0429 370 525
Freemasons Zenith Lodge	Karl Ibbotson	(08) 9963 4004
Isolated Children's Parent's Association	Karen Morrissey	(08) 9963 5828
Mission Australia	Carol Carter	(08) 9963 4144
Mount Magnet Aboriginal Corporation	Carole Minney	0447 074 220
Mount Magnet District High School P&C	Wendy McGorman	(08) 9963 4081
Mount Magnet Gymkhana Club	Janet Jones	0407 572 208
Mount Magnet Historical Society	Kevin Brand	(08) 9963 4244
Mount Magnet Leader	Brendan Penzer	(08) 9963 4007
Mount Magnet Markets	Amber Seivwright	(08) 9963 3000
Mount Magnet Op Shop	Kathy Shaw	(08) 9963 4244
Mount Magnet Pottery Group	Karin Sturges	0447 797 285
Mount Magnet Race Club	Melissa Evans	0427 199 281
Mount Magnet Seniors Group	Karen Williams	0400 711 615
Mount Magnet Volunteer Ambulance	Angela Van Kints	0428 025 835
Mount Magnet Volunteer Fire & Rescue	Crystal Sirrinc	0407 203 081
Mount Magnet Yamatji Church	George Taylor	0411 954 663
Presbyterian Inland Mission	Surendra Wesley	(08) 9963 4125
Rangeland Fibre & Produce Association	Anne Pilkington	(08) 9963 5827
St Brigid's Catholic Church	Sr Gerri Boylan	(08) 9963 4179
Wirnda Barna Artists	Brendan Penzer	(08) 9963 4007